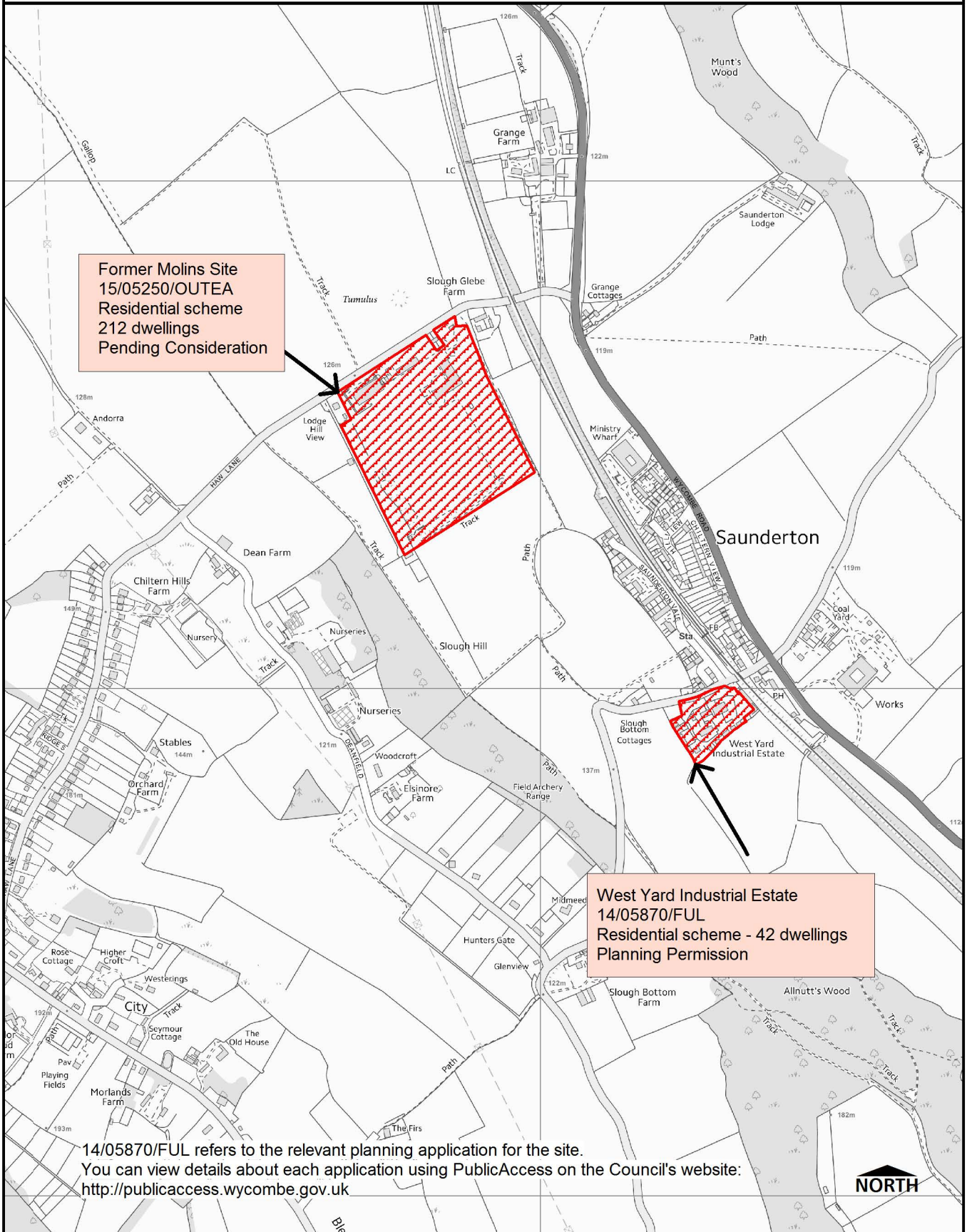


Housing Schemes proposed by developers / landowners at Saunderton



Former Molins Site
15/05250/OUTEA
Residential scheme
212 dwellings
Pending Consideration

West Yard Industrial Estate
14/05870/FUL
Residential scheme - 42 dwellings
Planning Permission

14/05870/FUL refers to the relevant planning application for the site.
You can view details about each application using PublicAccess on the Council's website:
<http://publicaccess.wycombe.gov.uk>



Statement of Purpose: Site Plan for Council Business Use Only			OS mapping: © Crown Copyright and database rights 2015 Ordnance Survey 100023306. Print for the public: You are not permitted to copy, sub-license, distribute, sell or otherwise make available the Licensed Data to third parties in any form. Aerial Photo Imagery 2010 and 2006: © Getmapping plc. www.getmapping.com.	
Map produced in MapInfo GIS by: WDC	Scale: 1:4000	Date: 03/07/2015	No Window	
Saved as Layout in Workspace Path/Name:			Spatial Information Management ICT Business Systems Queen Victoria Road High Wycombe Bucks HP11 1BB www.wycombe.gov.uk	