

**Delivery and Site Allocations Plan
Examination
Supporting Document**



CD7.3
Wycombe CIL Charging Schedule



COMMUNITY INFRASTRUCTURE LEVY

CHARGING SCHEDULE

NOVEMBER 2012

The Charging Authority

The Charging Authority is Wycombe District Council.

Date of Approval

This Charging Schedule was approved by the Council on 1st October 2012.

Date of Effect

This Charging Schedule will come into effect on 1st November 2012.

CIL Rates

The rate at which CIL is charged shall be:

Type of Development	Zone A	Zone B
Residential (C3; C4 including sheltered accommodation)	£125/sqm	£150/sqm
Convenience based supermarkets and superstores ¹ and retail warehousing ² (net retail selling space of over 280 sq metres)	£200/sqm	£200/sqm
All other retail A1 – A5 and sui generis uses akin to retail*	£125/sqm	£125/sqm
All other development including B, C1, C2 and D uses.	£0/sqm	£0/sqm

* sui generis akin to retail includes petrol filling stations; shops selling and/or displaying motor vehicles; retail warehouse clubs.

The Charging Zones

The Charging Zones A and B are defined in the “Community Infrastructure Levy Charging Zones” Map in Annex 1 of this Schedule.

Calculating the Chargeable Amount

The Council will calculate the amount of CIL payable (“chargeable amount”) in respect of a chargeable development in accordance with regulation 40 of the Community Infrastructure Levy Regulations 2010 (as amended).

¹ Superstores/supermarkets are shopping destinations in their own right where weekly food shopping needs are met and which can also include non-food floorspace as part of the overall mix of the unit.

² Retail warehouses are large stores specialising in the sale of household goods (such as carpets, furniture and electrical goods), DIY items and other ranges of goods, catering for mainly car-borne customers.

Statutory Compliance

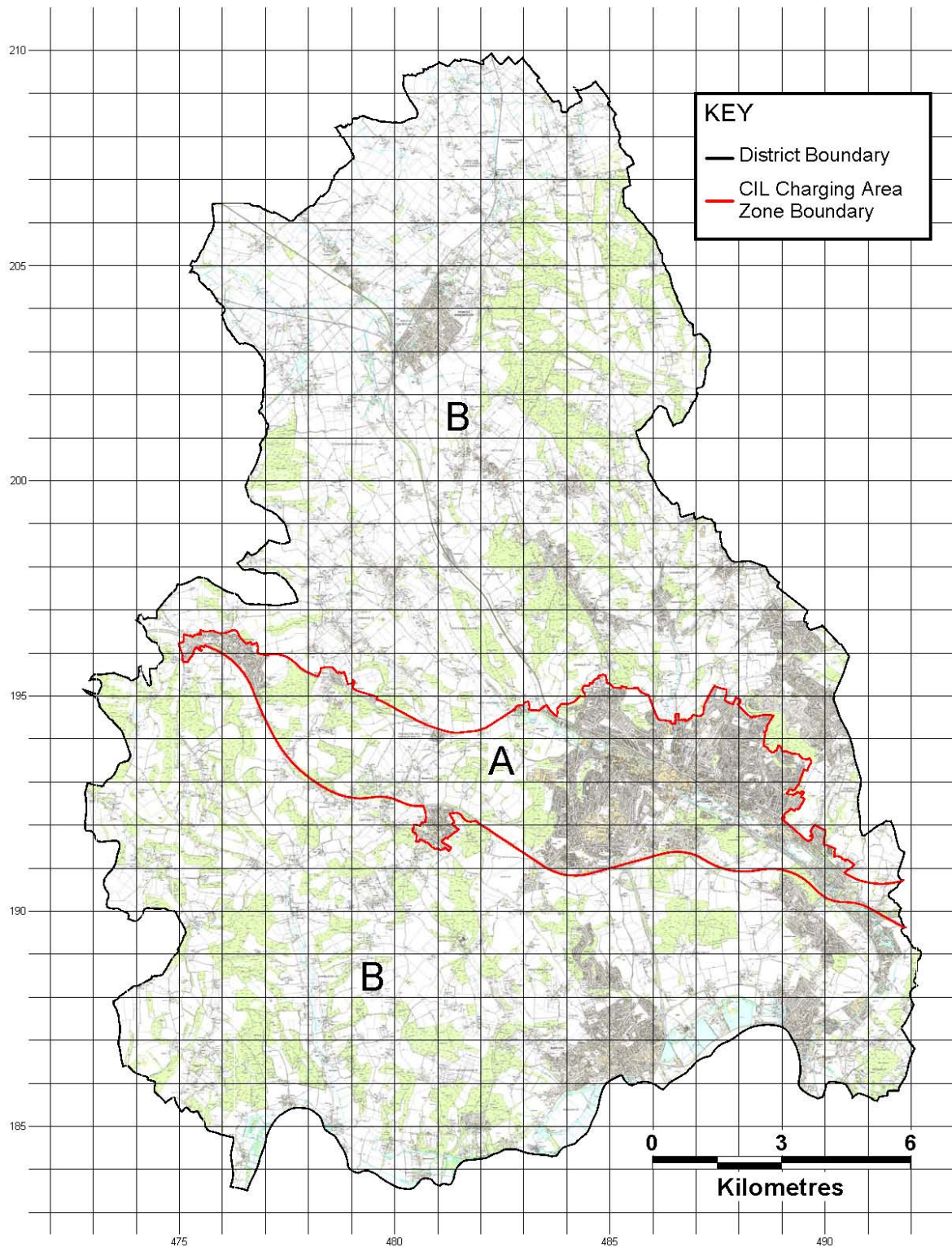
This Charging Schedule has been published in accordance with the Community Infrastructure Levy Regulations 2010 (as amended) and Part 11 of the Planning Act 2008.

Further Information

Further information on the Community Infrastructure Levy is available on the Council's website – www.wycombe.gov.uk

Annex 1

Community Infrastructure Levy Charging Zones – November 2012

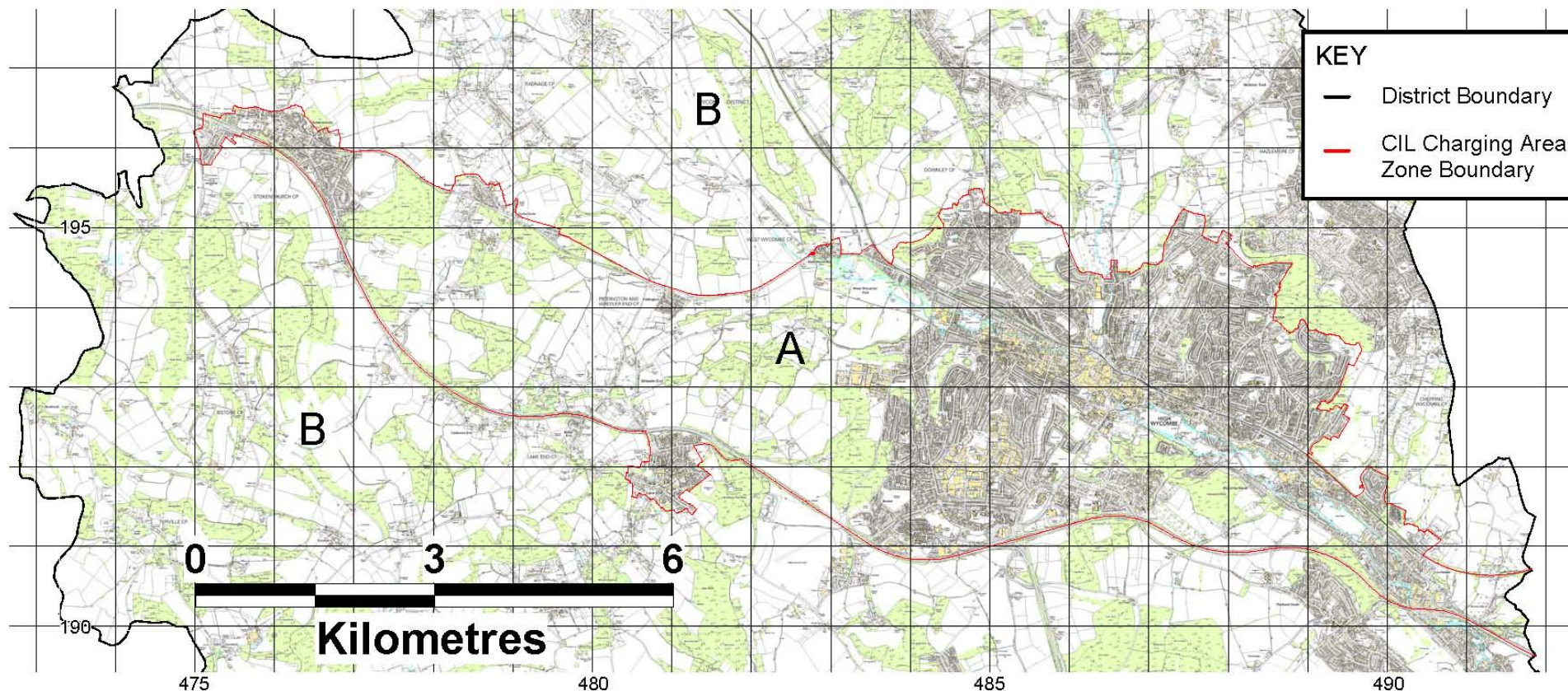


© Crown Copyright and database rights 2011 Ordnance Survey 100029306. Use of this data is subject to terms and conditions: You are granted a non-exclusive, royalty free, revocable licence solely to view the Licensed Data for non-commercial purposes for the period during which Wycombe District Council makes it available; you are not permitted to copy, sub-license, distribute, sell or otherwise make available the Licensed Data to third parties in any form; and third party rights to enforce the terms of this licence shall be reserved to Ordnance Survey.



CIL Charging Zones – Map Extract

Community Infrastructure Levy Charging Zones – November 2012



© Crown Copyright and database rights 2011 Ordnance Survey 100023306. Use of this data is subject to terms and conditions: You are granted a non-exclusive, royalty free, revocable licence solely to view the Licensed Data for non-commercial purposes for the period during which Wycombe District Council makes it available; you are not permitted to copy, sub-license, distribute, sell or otherwise make available the Licensed Data to third parties in any form; and third party rights to enforce the terms of this licence shall be reserved to Ordnance Survey.

