

Buckinghamshire County Council

HIGH WYCOMBE RESERVE SITES INFRASTRUCTURE ROUND TABLE

Paula Campbell-Balcombe and Stephen Chainani



Statutory Responsibility

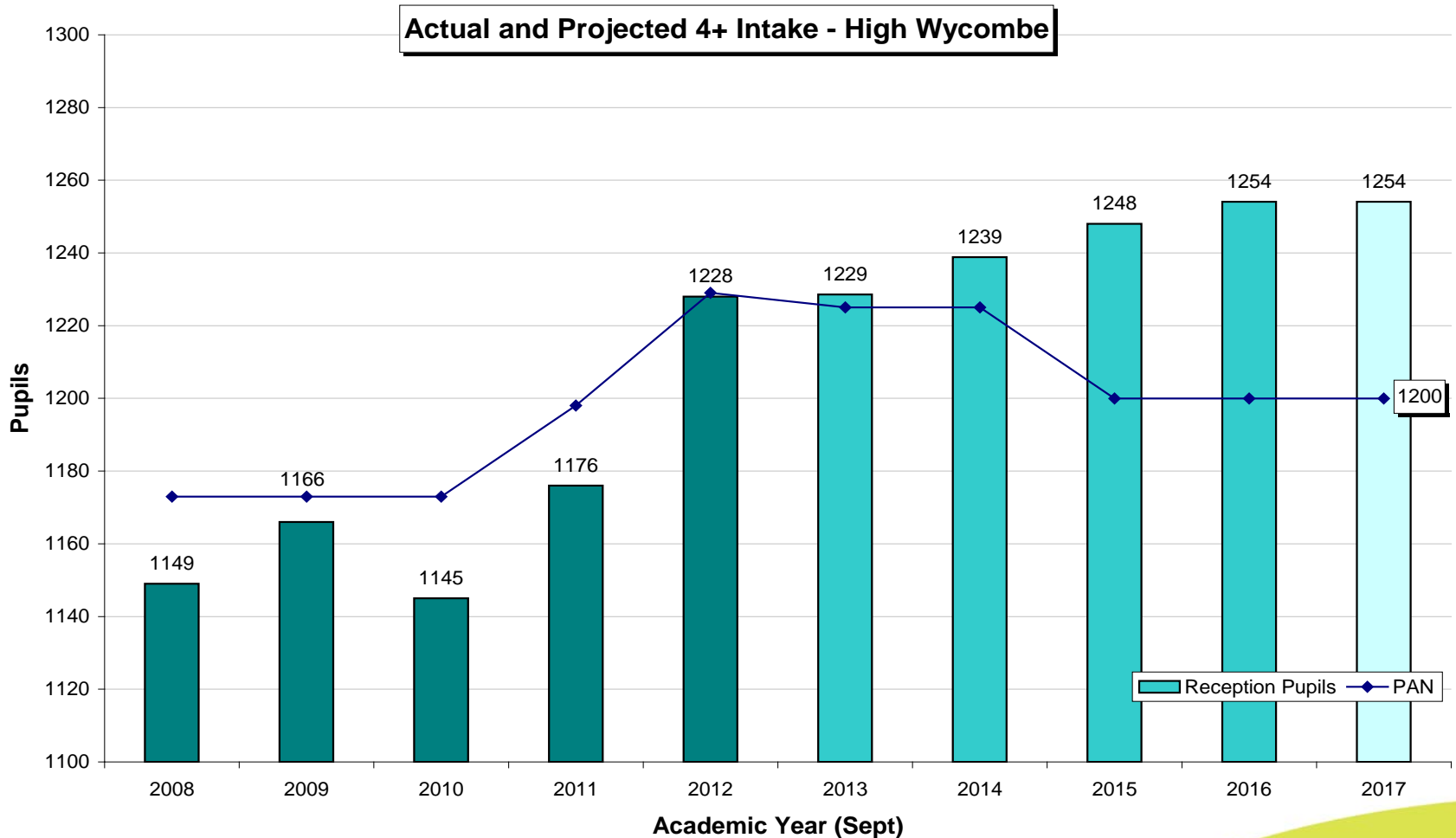
BCC has a statutory duty to ensure there are sufficient school places in its area. Expansion options will be subject to:

- **Statutory decision maker's guidance**
 - **Planning**
 - **Views of stakeholders**
 - **Availability of funding**
- 

Current Requirements

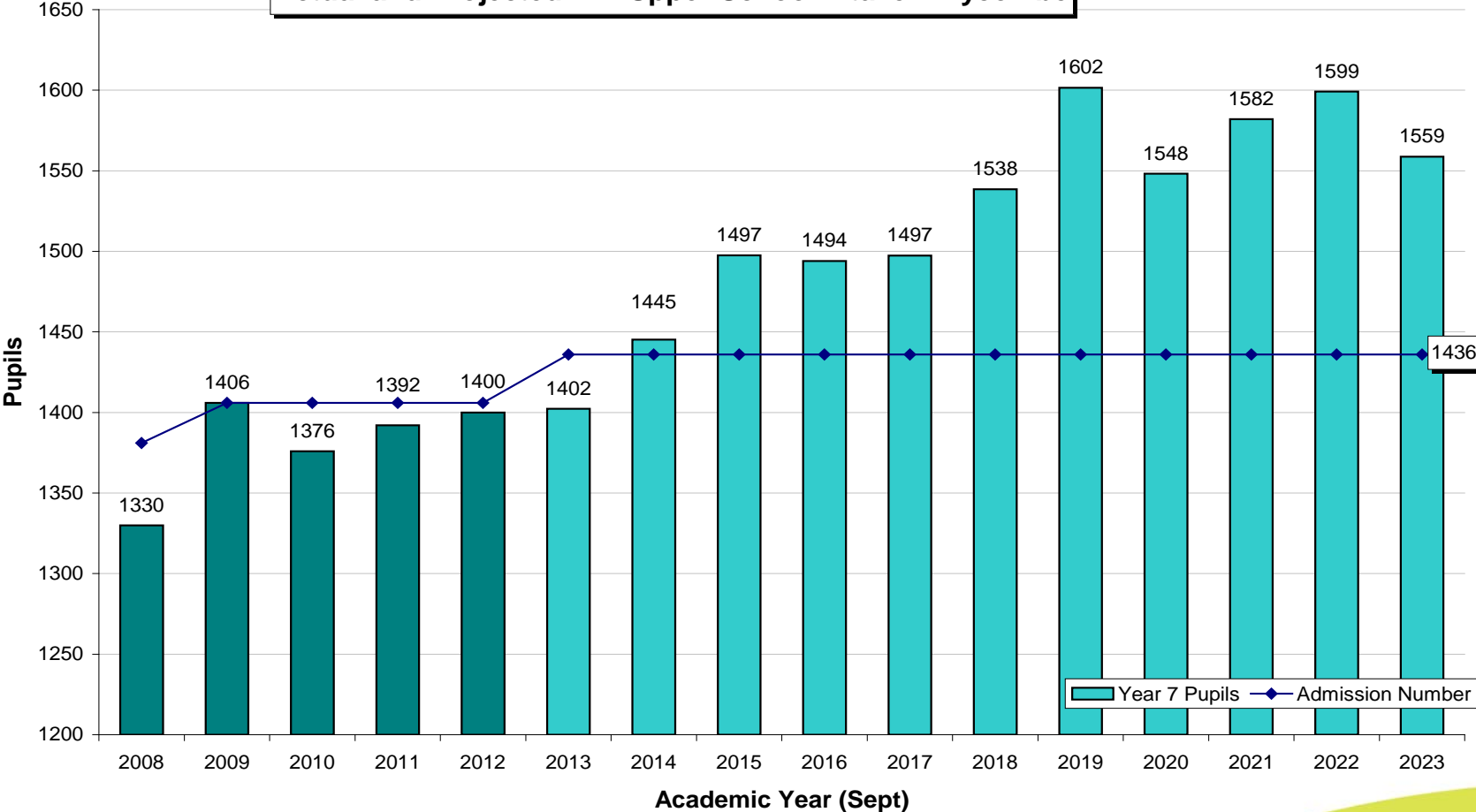
- 1.5 fe Primary Places by 2016 – est. cost £7m
 - 5fe Secondary Places by 2020 – est. cost £20-25m
- 

Need for additional infrastructure




Need for additional infrastructure

Actual and Projected 11+ Upper School Intake - Wycombe



Primary Places – Current Schemes

- **The Disraeli School & Children's Centre:** £5m project to expand school from 2fe to a 3fe school with additional nursery provision to accommodate 2 year olds. On site, due to complete Summer 2016
 - **Castlefield School:** £2m project to expand the school from 2.5fe to 3fe and to provide a standalone nursery to accommodate an additional 30 children. On site, due to complete Summer 2015
- 

Concept Design Castlefield Nursery



Fig3: Proposal for Castlefield Nursery School

Buckinghamshire County Council

New Nursery Castlefield



Proposed Site Plan Castlefield School

5.0

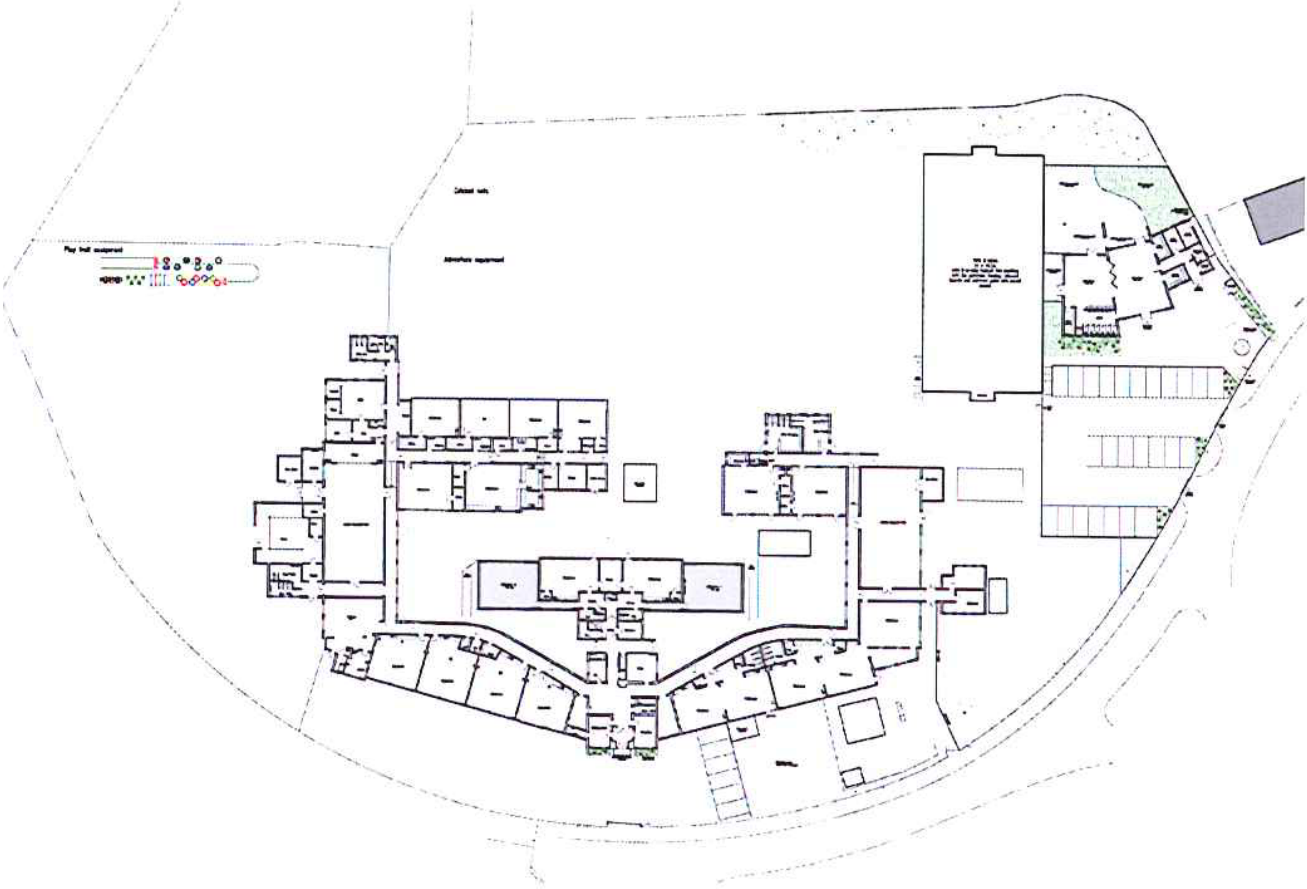


Fig 15: Proposed Site Plan

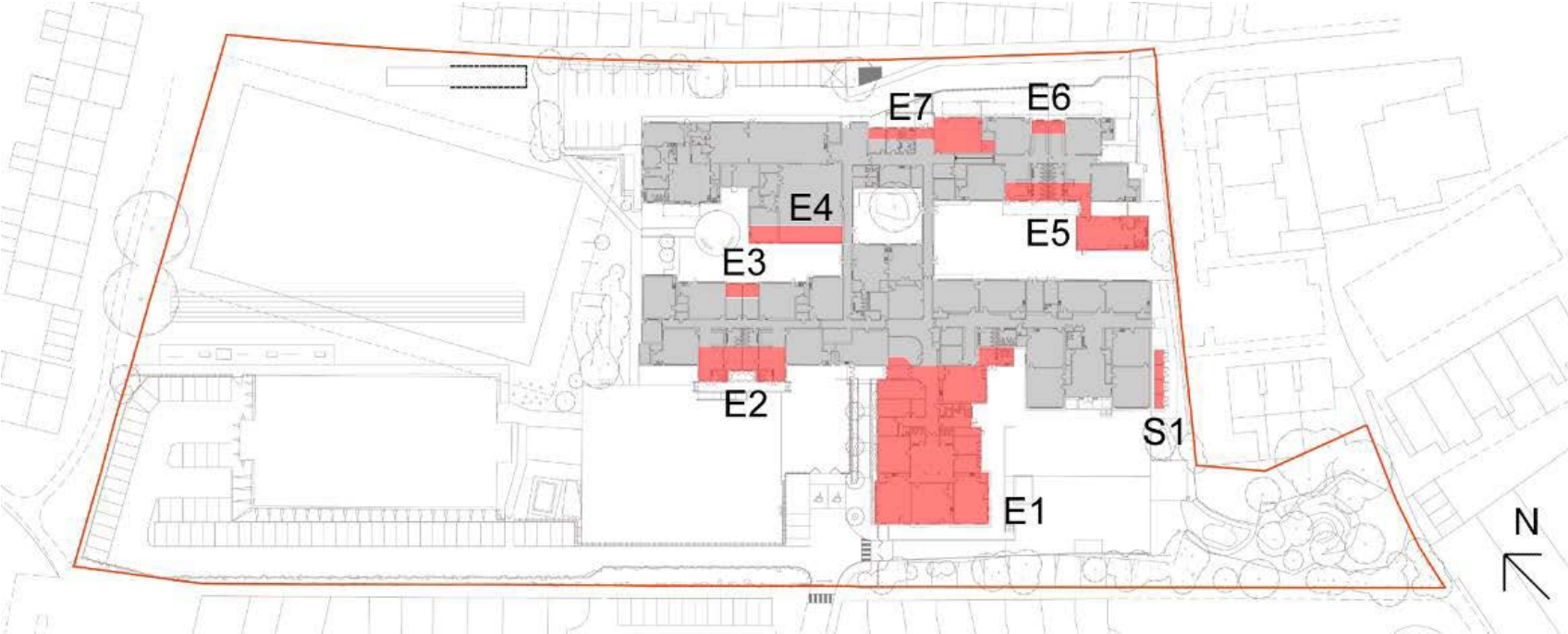


Buckinghamshire County Council

Concept Design Disraeli School



Block Plan Disraeli School Expansion



New access road to new carpark




New block Disraeli School



Primary Places Proposed Schemes

Feasibility Studies are currently underway at the following schools:


- Hazlemere – 1fe expansion
 - Cedar Park – 1fe expansion
 - Hughenden - 0.5fe expansion
 - Little Marlow – bulge class 2014 potential future expansion to 1fe
 - Millbrook – bulge class 2015
 - The Meadows – bulge class 2015
- 

Secondary Places Proposed Schemes

Feasibility Studies have completed and planning applications have been submitted at the following schools:

- St Michael's Catholic School – 1fe expansion
- Sir William Ramsay – 1fe expansion

Feasibility studies are underway at the following schools:

- Highcrest School – 1fe expansion
 - Princes Risborough Upper School – 1fe expansion
 - Great Marlow School – bulge class/1fe expansion
- 

Future Expansion Programme

No guarantee on future government funding!

If funding cannot be sourced to meet the costs of expanding schools then the LA will fail to meet its statutory duty.

This will result in pupils being placed at schools outside the area - increasing pressure on transport systems and reducing social cohesion.

Planning issues – highways issues, school drop off / parking and associated costs. Sport England issues.




Reserve Site Impact Primary

Reserve Site	Assumption of number of Homes on each site based on potential site capacities set out in Jan 2014 WDC consultation	Number of Pupils Generated	S106 Contribution
Abbey Barn North	75 homes	23 pupils	£342,299
Abbey Barn South	465 homes	142 pupils	£2,122,255
Gomm Valley	465 homes	142 pupils	£2,122,255
Ashwells	95 homes	29 pupils	£433,579
Terriers Farm	430 homes	132 pupils	£1,962,516
Slate Meadow	170 homes	52 pupils	£775,878
		520 Pupils Generated = 2fe +	

Reserve Sites Implications Primary

BCC is currently exploring expansion options to the east of High Wycombe to meet the additional 2 forms of entry generated by the four reserved sites in High Wycombe which include:

- **Expanding the new primary school on the Daws Hill development from a one form entry to two form entry school. The location of the school site and the design of the school buildings have been future proofed to allow further expansion;**
 - **Feasibility studies are currently being undertaken at Cedar Park School and Hazlemere CE School to expand the schools by an additional form of entry.**
 - **Slate Meadow falls in the Bourne End planning area. BCC would intend to expand Clayton's Combined School by half a form of entry to meet the cumulative impact of housing growth in the area including the Slate Meadow development.**
- 

Reserve Site Impact Secondary

Reserve Site	Assumption of number of Homes on each site based on potential site capacities set out in Jan 2014 WDC consultation	Number of Pupils Generated	S106 Contribution
Abbey Barn North	75 homes	12 pupils	CIL
Abbey Barn South	465 homes	74 pupils	CIL
Gomm Valley	465 homes	74 pupils	CIL
Ashwells	95 homes	15 pupils	CIL
Terriers Farm	430 homes	68 pupils	CIL
Slate Meadow	170 homes	27 pupils	CIL
		270 pupils Generated = 1fe+	

Parental choice is exercised to a greater degree at secondary level and the planning area covers a wider area including Holmer Green and Beaconsfield. BCC will therefore look to secure funding where necessary through alternative sources in particular CIL funding - which is to be used to address the cumulative impacts of developments on school places across the district

Thank you

Questions?

